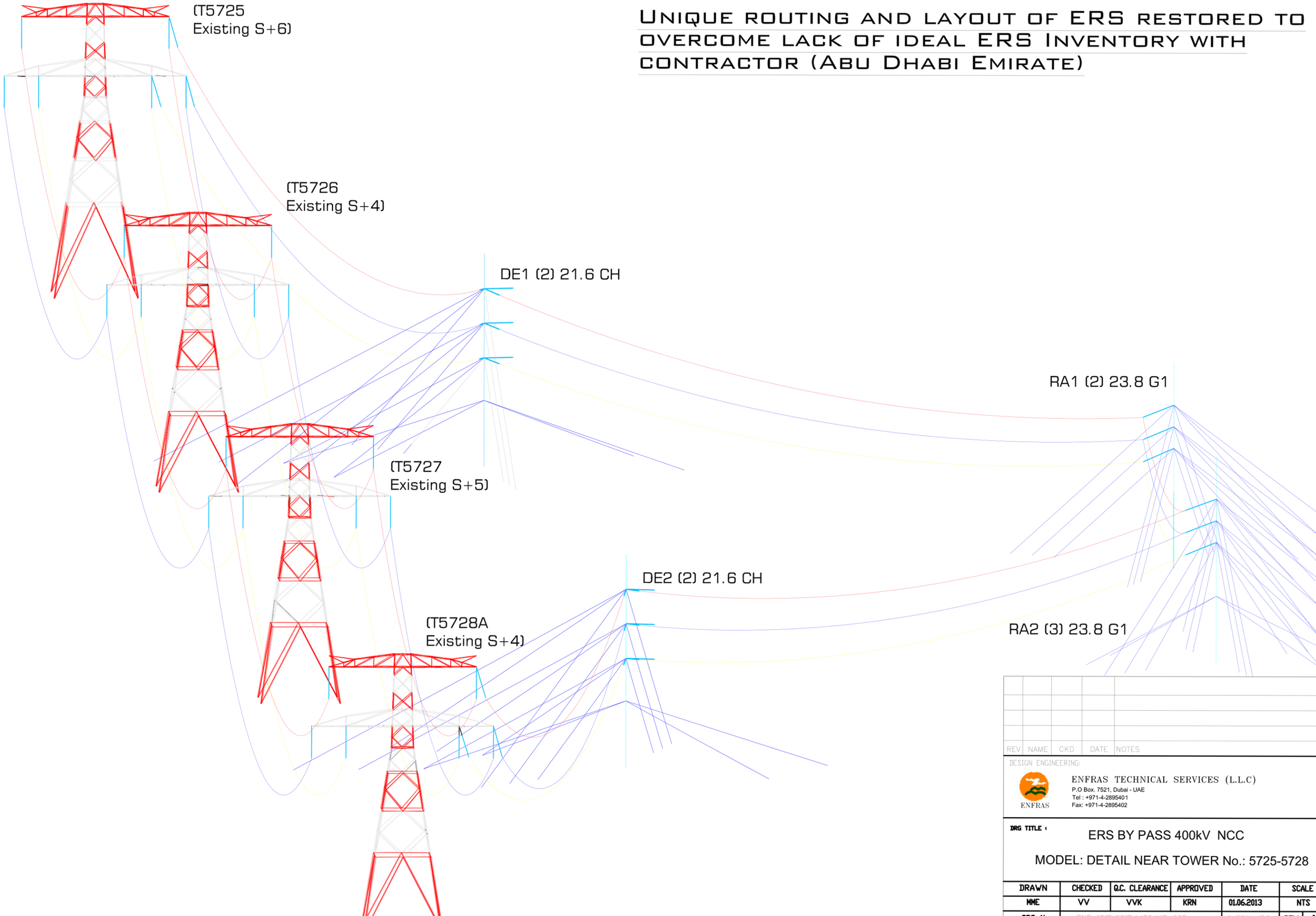


**UNIQUE ROUTING AND LAYOUT OF ERS RESTORED TO OVERCOME LACK OF IDEAL ERS INVENTORY WITH CONTRACTOR (ABU DHABI EMIRATE)**



REV	NAME	CKD	DATE	NOTES

DESIGN ENGINEERING:  
 ENFRAS TECHNICAL SERVICES (L.L.C)  
 P.O Box. 7521, Dubai - UAE  
 Tel : +971-4-2895401  
 Fax: +971-4-2895402

**DRG TITLE :** ERS BY PASS 400kV NCC  
 MODEL: DETAIL NEAR TOWER No.: 5725-5728

DRAWN	CHECKED	Q.C. CLEARANCE	APPROVED	DATE	SCALE
MME	VV	VVK	KRN	01.06.2013	NTS
DRG. No.	ENF-MME/MME/J30/X3-603			SHEET 1/1	REV 0